

Steel sheet insulated sandwich panel with expanded polyurethane foam insulated core and male/female or female/female joints. Used for external cladding, internal partitions and false ceilings where good thermal properties are required.


Certifications


CE CE marking
in accordance with EN 14509

B Reaction to fire
class B- s3- d0 e B - s2 - d0
in accordance with EN 13501-1


A Reaction to fire
class A in accordance with ASTM E84


Use and specifications

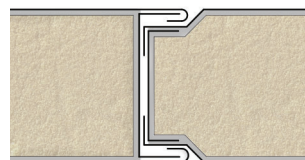
 Wall and false ceiling

 Thermal insulation

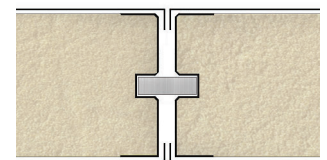
Options

 Customisable upper and lower profile materials and shapes for assembly needs

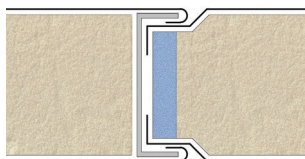
 Upon request, internal fitting for technical equipment



M/F steel sheet

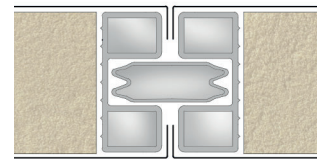


F/F steel



M/F Styrofoam/PVC *

* PVC can be replaced with steel sheet. Use of PVC profile is limited to specific thicknesses.



F/F PVC *

Reference dimensions*:

Width.	Length.	Thickness.
1200 mm	6000 mm max	30 - 120 mm

* Size can be customised to prevent cuts and adjustments.

Uran Thermo - int./ext. steel sheet 0.45 mm core: POLYURETHANE

thickness (mm)	30	35	40	50	55	60	80	100	120
weight (kg/m ²)	8.5	8.7	8.9	9.4	9.6	9.8	10.80	11.70	12.60
transmitt. (W/m ² K)	0.71	0.62	0.54	0.44	0.4	0.37	0.28	0.23	0.19