

Sandwich panel in steel sheet and expanded polyurethane insulated core, with PVC tubes inside for wiring and reinforcements for fixing suspended elements. Used as external cladding or as an internal partition in modular building.

### Certifications



CE marking  
in accordance with EN 14509

### Use and specifications



Wall



Fast assembly with fastening  
at the bottom part of the panel

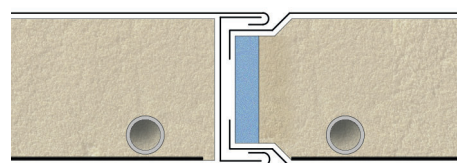
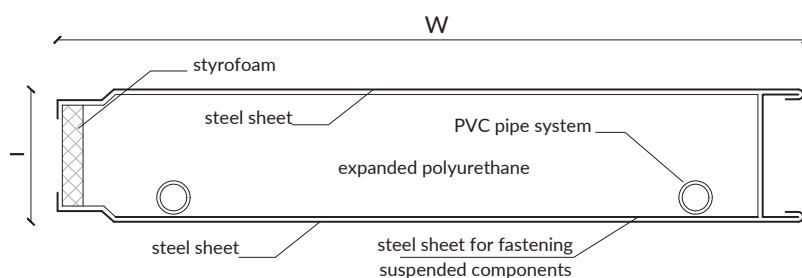


Thermal  
insulation

### Options



Customizable upper and lower  
profile materials and shapes



### Reference dimensions\*:

| Width.  | Length.     | Thickness.  |
|---------|-------------|-------------|
| 1200 mm | 6000 mm max | 40 - 120 mm |

\* Size can be customized to prevent cuts and adjustments.

### Uran Thermo Easywiring - int./ext. steel sheet 0.45 mm core: POLYURETHANE

| thickness (mm)                 | 40   | 50   | 55   | 60   | 80   | 100  | 120  |
|--------------------------------|------|------|------|------|------|------|------|
| weight (kg/m <sup>2</sup> )    | 8.9  | 9.4  | 9.6  | 9.8  | 10.8 | 11.7 | 12.6 |
| transmit. (W/m <sup>2</sup> K) | 0.54 | 0.44 | 0.40 | 0.37 | 0.28 | 0.23 | 0.19 |